

MEGPass Face Recognition Access Control Terminal (2.8")

MegEye-W4K-I31-N0 is a star product of the MEGVII AIOT hardware product family. This device provides safe, fast, and smooth passing experience for customers by its cutting-edge algorithm based on deep learning, and the infra + RGB cameras. It support multi-authentication ways like face recognition, password, QR Code.



Product Features



Recognition

50,000 face capacity, accuracy > 99.8%, speed ≤ 300 ms.



Light Adaptability

Working in different light environment, even in 0 lux dark scene.



Anti-Spoofing

RGB+IR liveness detection, effectively defending against various forms of attacks such as photos, 3D paper models.



Multifunction

Supporting multiple authentication such as card and QR codes.



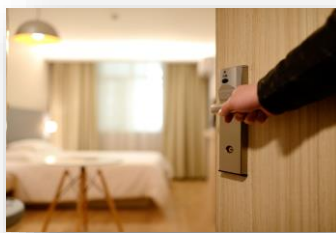
Integration

Rich REST API and SDK make integration very easy and friendly.

Application Scenarios



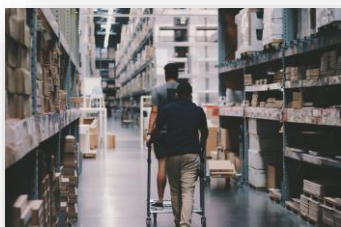
Smart Campus



Smart Hotel



Smart Office



Warehouse Management



Smart Locker



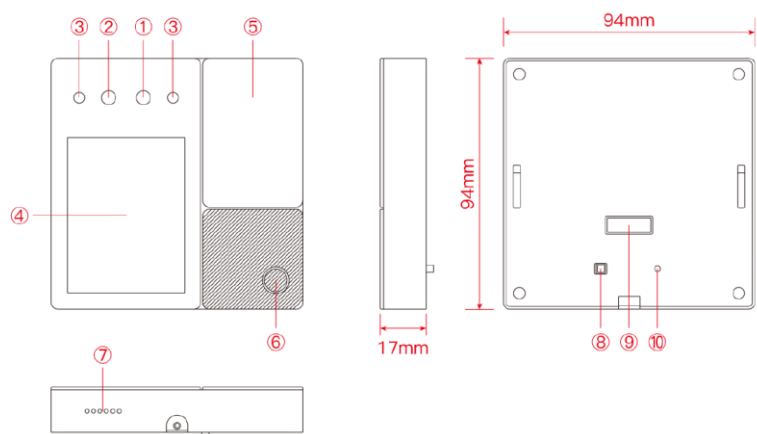
Dormitory

Specification

Model: MegEye-W4K-I31-N0

| System | |
|---------------------|----------------------------|
| Face Capacity | 5W |
| Operation System | Linux |
| Main Processor | DV300 |
| RAM | 512MB |
| ROM | 4GB |
| Screen Size | 2.8-inch |
| Camera resolution | 2MP *2 |
| Fill Light | IR |
| Internet | |
| Network Interface | 1*100M Ethernet Port |
| Wi-Fi | Support 2.4G |
| Bluetooth | Bluetooth4.0 +LE |
| Interface | |
| Lock output | 1 |
| Door contact output | 1 |
| Exit button input | 1 |
| Alarm input | 1 |
| Alarm output | 1 |
| Wiegand | wiegand 34/26, 1 in /1 out |
| RS485 | 1 |
| USB | USB2.0 *1; |
| Reset Button | 1 |
| Tamper Button | 1 |

| Card | |
|---------------------|---|
| M1 type | Support |
| Power | |
| Adapter | 12V,2A, not included |
| PoE | not support defaultly support PoE expander |
| Audio | |
| Speaker | Support (less than 90dB) |
| General | |
| Language | English, Thai, Japanese |
| Housing Materials | PC+ABS; Aluminum alloy frame |
| Working Temperature | -10°C~50°C |
| Mask Recognition | Support |
| Working environment | Indoor |
| Dimensions | 94mm x94mm x17mm |
| Protective Level | IP41 |
| Installation | Wall mount/Desktop/Embedded |
| Certification | CE |



- ① Visible Light Camera
- ② Infrared Camera
- ③ Infrared Fill Light
- ④ Display Screen
- ⑤ Card Tap Area

- ⑥ Indicator Light
- ⑦ Speaker
- ⑧ Tamper Button
- ⑨ External cable Connection
- ⑩ Reset Button

Contact



Megvii Technology Limited

Phone: 400-6700-866
 Website: www.megvii.com
 Email: business@megvii.com
 Address: 3rd Floor, Raycom Info Tech Tower A, No. 2
 Kexueyuan South Road, Beijing

